

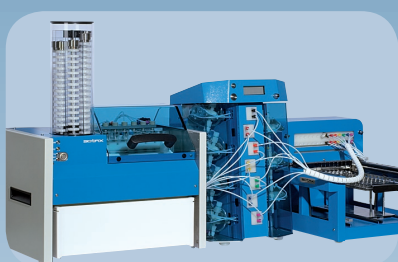
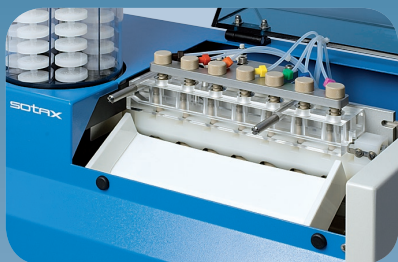


The SOTAX FS 7 Filter Station for reliable automated filter changes after sampling in semi-automated dissolution systems.

- ▶ **Automates filter changes** after each sampling point for extended testing and media change methods
- ▶ **Solves filter clogging** or saturation problems associated with 25 mm diameter filters
- ▶ For use with on-line UV/VIS, off-line sample collection or on-/off-line semi-automated SOTAX dissolution systems; no retrofit needed
- ▶ **Uses SOTAX and Zymark® certified Pall™ PSF filters** and common brand 25 mm luer-lock filters down to 0.45 micron pore size
- ▶ **Controllable by 21 CFR Part 11 compliant WinSOTAX** advanced dissolution software and AT 7smart firmware

www.sotax.com | e-mail info@sotax.com





Description

Some dissolution profiles are more difficult than others. Due to filter saturation, clogging or media changes, some extended release testing can be interrupted. The SOTAX FS 7 Filter Station allows the user to define in the method an automated filter change after each sampling point. Driven by WinSOTAX advanced dissolution software and AT 7smart firmware, the SOTAX FS 7 can be installed with all existing semi-automated SOTAX dissolution systems without any major retrofits.

The SOTAX FS 7 was designed from our fully automated dissolution system, the AT 70smart filter station module. The AT 70smart is a fully automated dissolution testing system for up to 15 unattended tests. The system automates media preparation and delivery, tablet drop and basket change, filter change, sample analysis and wash cycles. The AT 70smart has been used for non-stop daily routine dissolution testing worldwide since 1989.

Features

The SOTAX FS 7 can be used in all SOTAX on-line UV/VIS, off-line for sample collection or on-/off-line systems equipped with piston pumps CY 7-50 or CP 7-35 controlled by WinSOTAX advanced dissolution software and AT 7smart firmware. Piston pumps are required so that sample collection accuracy is not compromised.

In the manual mode (filter change occurs by just pressing a button) the SOTAX FS 7 can be used with other manufacturer's dissolution systems with piston style pumps.

The SOTAX FS 7 can be used with common brand 25 mm syringe filters including Pall™ certified filters down to 0.45 micron pore size.

► Easy method validation and transfer:

The SOTAX Filter Station FS 7 gives a semi-automated system another possibility to get closer to the manual method and makes automation validation easier. In addition, method transfer from a semi-automated system to a fully automated system is now simpler than ever!

► Certified Filters:

SOTAX and Zymark® certified Pall™ PSF filters are manufactured to the critical tolerances necessary to ensure accurate and reliable performance. These filters have been engineered to specific dimensions to provide uniform housing and optimized inlet and outlet designs. Stringent adherence to such critical dimensions is vital in ensuring consistent filter delivery, positioning, and operation of each and every filter that passes through our automated workstations.

Specification

Number of filters	7 x 20 = 140
Type of filters	25 mm luer-lock filters down to porosity 0.45 micron
Width/depth/height	500/330/680 mm 19.66/12.97/26.74 in
Weight	26 kg 57.37 lb
Power	230V/50 Hz or 115V/60 Hz
Air inlet	3–5 bars, inlet Ø 6 mm

Order information

Part #	Description
9910	SOTAX FS 7 including control cable
4162-1	Bundle tubes 7 x 1,5/3 x 1300

Please refer to our flyer about AT 7smart semi-automated systems for additional information.